

Test Report

No. NGBML1501691302

Date: 05 Jun 2015

Page 1 of 5

YUEQING DALIER ELECTRICAL FACTORY

(SHANG FENG VILLAGE)EAST ROAD QIAO HOUYANG LIUSHI YUEQING ZHEJIANG PROVINCE,CHINA

The following sample(s) was/were submitted and identified on behalf of the clients as : CABLE LUG

SGS Job No. : NBIN1505004128PC - NB

Product Specification : 2L25M6

Client Ref. Information : SEE ATTACHMENT

Date of Sample Received : 19 May 2015

Testing Period : 19 May 2015 - 25 May 2015

Test Requested : Selected test(s) as requested by client.

Test Method : Please refer to next page(s).

Test Results : Please refer to next page(s).

Conclusion : Based on the performed tests on submitted sample(s), the results of Lead, Mercury, Cadmium, Hexavalent chromium comply with the limits as set by RoHS Directive 2011/65/EU Annex II; recasting 2002/95/EC.

Signed for and on behalf of
SGS-CSTC Standards Technical Services Co., Ltd. Ningbo Branch



Iris Xiao

Approved Signatory



This document is issued by the Company subject to its General Conditions of Service printed overleaf, available on request or accessible at <http://www.sgs.com/en/Terms-and-Conditions.aspx> and, for electronic format documents, subject to Terms and Conditions for Electronic Documents at <http://www.sgs.com/en/Terms-and-Conditions/Terms-e-Documents.aspx>. Attention is drawn to the limitation of liability, indemnification and jurisdiction issues defined therein. Any holder of this document is advised that information contained hereon reflects the Company's findings at the time of its intervention only and within the limits of Client's instructions, if any. The Company's sole responsibility is to its Client and this document does not exonerate parties to a transaction from exercising all their rights and obligations under the transaction documents. This document cannot be reproduced except in full, without prior written approval of the Company. Any unauthorized alteration, forgery or falsification of the content or appearance of this document is unlawful and offenders may be prosecuted to the fullest extent of the law. Unless otherwise stated the results shown in this test report refer only to the sample(s) tested.

Attention: To check the authenticity of testing /inspection report & certificate, please contact us at telephone: (86-755) 8307 1443, or email: CN.Doccheck@sgs.com

1-5F West No. 4 Building, Lingyun Industry Park, No.1177 Lingyun Road, Ningbo National Hi-Tech Zone, Ningbo, China 315040 t: E&E (86-574)89070249 t: ML (86-574)89070242 www.sgsgroup.com.cn
中国·浙江·宁波市国家高新区凌云路1177号凌云产业园4号楼西1-5层 邮编: 315040 t: HL (86-574)89070271 t: TY (86-574)89070211 e: sgs.china@sgs.com

Test Results :

Test Part Description :

Specimen No.	SGS Sample ID	Description
SN1	NGB15-016913.001	SILVERY METAL

Remarks :

- (1) 1 mg/kg = 0.0001%
- (2) MDL = Method Detection Limit
- (3) ND = Not Detected (< MDL)
- (4) "-" = Not Regulated

RoHS Directive 2011/65/EU

Test Method : (1) With reference to IEC 62321-5:2013, determination of Cadmium by ICP-OES.
 (2) With reference to IEC 62321-5:2013, determination of Lead by ICP-OES.
 (3) With reference to IEC 62321-4:2013, determination of Mercury by ICP-OES.
 (4) With reference to IEC 62321:2008, determination of Hexavalent Chromium by spot test / Colorimetric Method using UV-Vis.

<u>Test Item(s)</u>	<u>Limit</u>	<u>Unit</u>	<u>MDL</u>	<u>001</u>
Cadmium (Cd)	100	mg/kg	2	ND
Lead (Pb)	1000	mg/kg	2	ND
Mercury (Hg)	1000	mg/kg	2	ND
Hexavalent Chromium (CrVI)	-	-	◇	Negative

Notes :

- (1) The maximum permissible limit is quoted from directive 2011/65/EU, Annex II
- (2) ◇Spot-test:
 Negative = Absence of Cr(VI) coating, Positive = Presence of Cr(VI) coating;
 (The tested sample should be further verified by boiling-water-extraction method if the spot test result is Negative or cannot be confirmed.)
 ◇Boiling-water-extraction:
 Negative = Absence of Cr(VI) coating
 Positive = Presence of Cr(VI) coating; the detected concentration in boiling-water-extraction solution is equal or greater than 0.02 mg/kg with 50 cm² sample surface area.
 Information on storage conditions and production date of the tested sample is unavailable and thus results of Cr(VI) represent status of the sample at the time of testing.



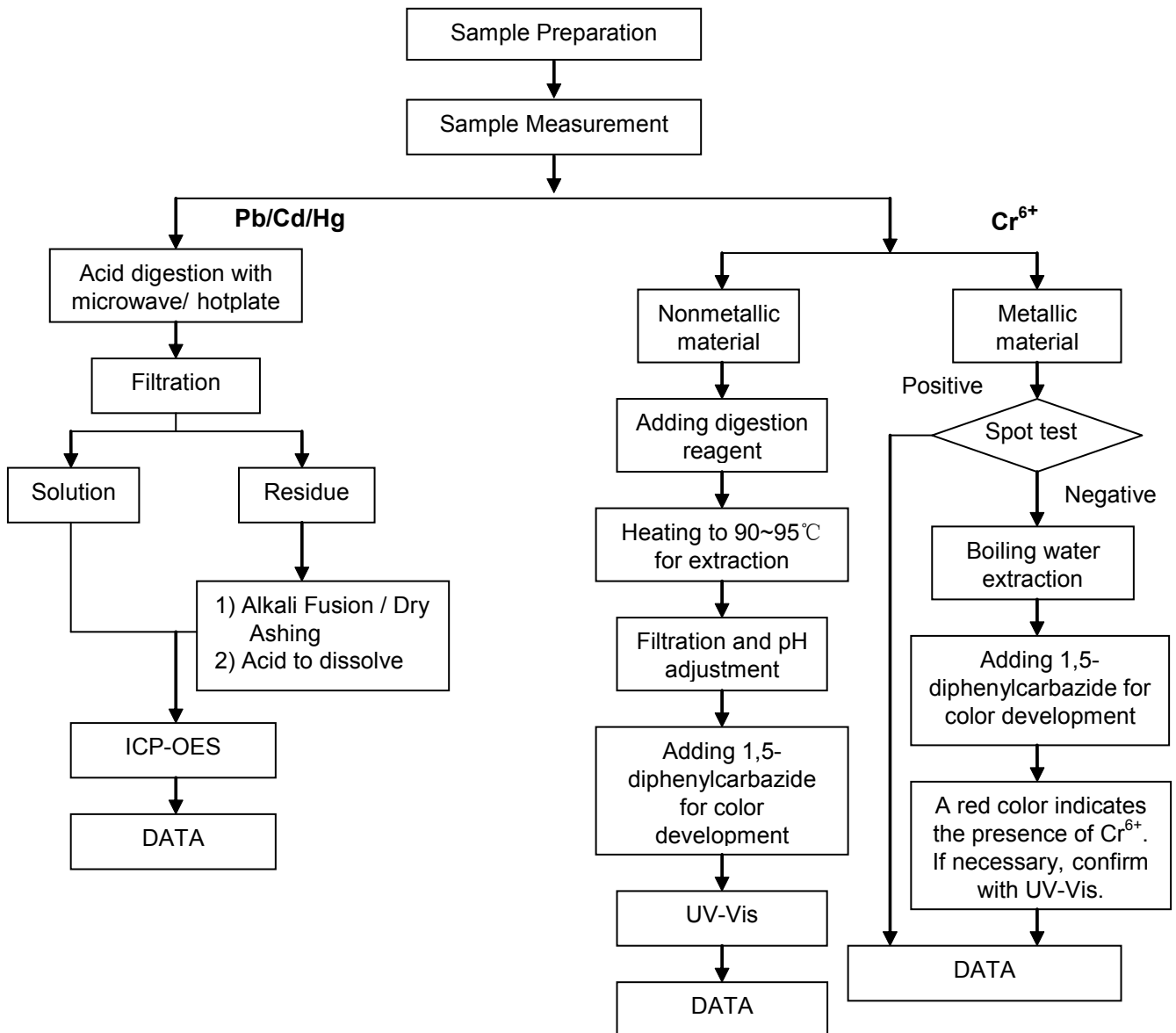
This document is issued by the Company subject to its General Conditions of Service printed overleaf, available on request or accessible at <http://www.sgs.com/en/Terms-and-Conditions.aspx> and, for electronic format documents, subject to Terms and Conditions for Electronic Documents at <http://www.sgs.com/en/Terms-and-Conditions/Terms-e-Document.aspx>. Attention is drawn to the limitation of liability, indemnification and jurisdiction issues defined therein. Any holder of this document is advised that information contained hereon reflects the Company's findings at the time of its intervention only and within the limits of Client's instructions, if any. The Company's sole responsibility is to its Client and this document does not exonerate parties to a transaction from exercising all their rights and obligations under the transaction documents. This document cannot be reproduced except in full, without prior written approval of the Company. Any unauthorized alteration, forgery or falsification of the content or appearance of this document is unlawful and offenders may be prosecuted to the fullest extent of the law. Unless otherwise stated the results shown in this test report refer only to the sample(s) tested.

Attention: To check the authenticity of testing /inspection report & certificate, please contact us at telephone: (86-755) 8307 1443, or email: CN.Doccheck@sgs.com

ATTACHMENTS

RoHS Testing Flow Chart

- 1) Name of the person who made testing: Martin Ding
- 2) Name of the person in charge of testing: Peter Xi
- 3) These samples were dissolved totally by pre-conditioning method according to below flow chart. (Cr⁶⁺ test method excluded)



This document is issued by the Company subject to its General Conditions of Service printed overleaf, available on request or accessible at <http://www.sgs.com/en/Terms-and-Conditions.aspx> and, for electronic format documents, subject to Terms and Conditions for Electronic Documents at <http://www.sgs.com/en/Terms-and-Conditions/Terms-e-Documents.aspx>. Attention is drawn to the limitation of liability, indemnification and jurisdiction issues defined therein. Any holder of this document is advised that information contained hereon reflects the Company's findings at the time of its intervention only and within the limits of Client's instructions, if any. The Company's sole responsibility is to its Client and this document does not exonerate parties to a transaction from exercising all their rights and obligations under the transaction documents. This document cannot be reproduced except in full, without prior written approval of the Company. Any unauthorized alteration, forgery or falsification of the content or appearance of this document is unlawful and offenders may be prosecuted to the fullest extent of the law. Unless otherwise stated the results shown in this test report refer only to the sample(s) tested.

Attention: To check the authenticity of testing / inspection report & certificate, please contact us at telephone: (86-755) 8307 1443, or email: CN.Doccheck@sgs.com

Attachment:

L16M6	SC50-8	RNB S1.25-3.5	RNB 8-8	RNB 180-10
L25M6	SC50-10	RNB M1.25-3.5	RNB 8-10	RNB 180-12
L35M8	SC50-12	RNB L1.25-3.5	RNB 8-12	RNB 200-10
L50M8	SC70-8	RNB S1.25-4	RNB 14-5	RNB 200-12
L70M10	SC70-10	RNB L1.25-4	RNB S14-6	RNB 200-16
L95M12	SC70-12	RNB S1.25-5	RNB L14-6	RNB 325-12
L120M12	SC95-8	RNB L1.25-5	RNB 14-8	RNB 325-16
L150M12	SC95-10	RNB 1.25-6	RNB 14-10	SNB 1.25-3
L185M16	SC95-12	RNB 1.25-8	RNB 14-12	SNB S1.25-3.5
L240M16	SC120-10	RNB 1.25-10	RNB S22-6	SNB L1.25-3.5
L400M16	SC120-12	RNB 2-3	RNB L22-6	SNB S1.25-4
L500M16	SC120-16	RNB S2-3.5	RNB 22-8	SNB M1.25-4
2L16M6	SC150-10	RNB M2-3.5	RNB 22-10	SNB L1.25-4
2L25M6	SC150-12	RNB L2-3.5	RNB 22-12	SNB S1.25-5
2L35M8	SC150-16	RNB S2-4	RNB 38-6	SNB L1.25-5
2L50M8	SC185-12	RNB L2-4	RNB S38-8	SNB S1.25-6
2L70M12	SC185-16	RNB S2-5	RNB L38-8	SNB L1.25-6
2L95M12	SC240-12	RNB L2-5	RNB S38-10	SV1.25-8
2L120M12	SC240-16	RNB 2-6	RNB L38-10	SNB 2-3
2L150M12	SC240-20	RNB 2-8	RNB 38-12	SNB S2-3.5
2L185M12	SC300-16	RNB 2-10	RNB 60-6	SNB L2-3.5
2L240M14	SC400-16	RNB2-12	RNB 60-8	SNB S2-4
2L240M12	SC500-16	RNB 3.5-4	RNB 60-10	SNB M2-4
2L400M12	SC630-20	RNB S3.5-5	RNB 60-12	SNB L2-4
2L500M12	BN 1.25	RNB L3.5-5	RNB 60-16	SNB S2-5
SC1.5	BN 2	RNB 3.5-6	RNB 70-6	SNB L2-5
SC2.5	BN 3.5	RNB 5.5-3.5	RNB 70-8	SNB S2-6
SC4	BN 5.5	RNB S5.5-4	RNB 70-10	SNB L2-6
SC6-5	BN 8	RNB L5.5-4	RNB 70-12	SV 2-8
SC6-6	BN 14	RNB 5.5-5	RNB 70-16	SNB 3.5-4
SC10-6	BN 22	RNB 5.5-6	RNB 80-8	SNB 3.5-5
SC10-8	BN 38	RNB 5.5-8	RNB 80-10	SNB 3.5-6
SC16-6	BN 60	RNB 5.5-10	RNB 80-12	SNB 5.5-3.5
SC16-8	BN 70	RNB 5.5-12	RNB 100-8	SNB S5.5-4
SC25-6	BN 80	RNB 8-4	RNB 100-10	SNB L5.5-4
SC25-8	BN 100	RNB S8-5	RNB 100-11	SNB 5.5-5
SC25-10	BN 150	RNB M8-5	RNB 100-12	SNB S5.5-6
SC35-6	BN 180	RNB L8-5	RNB 100-16	SNB L5.5-6
SC35-8	BN 200	RNB S8-6	RNB 150-10	SNB 5.5-8
SC35-10	BN 325	RNB L8-6	RNB 150-12	SNB 8-4
SC35-12	RNB 1.25-3			



This document is issued by the Company subject to its General Conditions of Service printed overleaf, available on request or accessible at <http://www.sgs.com/en/Terms-and-Conditions.aspx> and, for electronic format documents, subject to Terms and Conditions for Electronic Documents at <http://www.sgs.com/en/Terms-and-Conditions/Terms-e-Document.aspx>. Attention is drawn to the limitation of liability, indemnification and jurisdiction issues defined therein. Any holder of this document is advised that information contained hereon reflects the Company's findings at the time of its intervention only and within the limits of Client's instructions, if any. The Company's sole responsibility is to its Client and this document does not exonerate parties to a transaction from exercising all their rights and obligations under the transaction documents. This document cannot be reproduced except in full, without prior written approval of the Company. Any unauthorized alteration, forgery or falsification of the content or appearance of this document is unlawful and offenders may be prosecuted to the fullest extent of the law. Unless otherwise stated the results shown in this test report refer only to the sample(s) tested.

Attention: To check the authenticity of testing /inspection report & certificate, please contact us at telephone: (86-755) 8307 1443, or email: CN.Doccheck@sgs.com

Sample photo:



SGS authenticate the photo on original report only

*** End of Report ***



This document is issued by the Company subject to its General Conditions of Service printed overleaf, available on request or accessible at <http://www.sgs.com/en/Terms-and-Conditions.aspx> and, for electronic format documents, subject to Terms and Conditions for Electronic Documents at <http://www.sgs.com/en/Terms-and-Conditions/Terms-e-Documents.aspx>. Attention is drawn to the limitation of liability, indemnification and jurisdiction issues defined therein. Any holder of this document is advised that information contained hereon reflects the Company's findings at the time of its intervention only and within the limits of Client's instructions, if any. The Company's sole responsibility is to its Client and this document does not exonerate parties to a transaction from exercising all their rights and obligations under the transaction documents. This document cannot be reproduced except in full, without prior written approval of the Company. Any unauthorized alteration, forgery or falsification of the content or appearance of this document is unlawful and offenders may be prosecuted to the fullest extent of the law. Unless otherwise stated the results shown in this test report refer only to the sample(s) tested.

Attention: To check the authenticity of testing /inspection report & certificate, please contact us at telephone: (86-755) 8307 1443, or email: CN_Doccheck@sgs.com