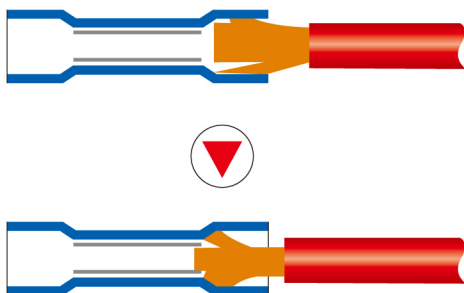
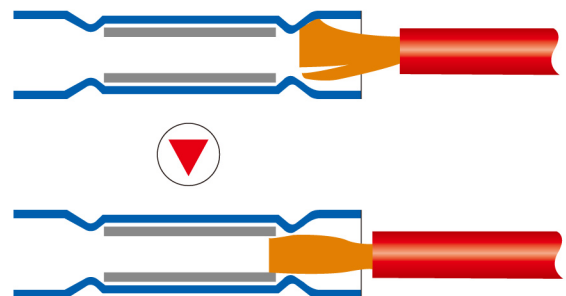


New developed product: Funnel Easy-Entry terminal, compare to standard terminal, its special design funnel shape, have two function: First the wire easily pass through the terminal when use, Second guarantee all wire enter the terminal tube, no surplus wire separate before the terminal tube, that make the product have perfect conduct capability. Detailed direction picture as follows:



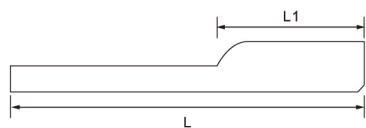
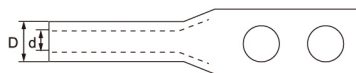
一般旧式绝缘端子
STANDARD



易进式绝缘端子
FUNNEL EASY-ENTRY

产品 Product	示意图 Drawing	描述 Description	举例型号 Sample type
		STANDARD	RV1.25-3 SV1.25-3
		STANDARD WITH EXTRA COPPER SLEEVE	ERV1.25-3 ESV1.25-3
		VINYL-INSULATED FUNNEL EASY-ENTRY	TRV1.25-3 TSV1.25-3
		VINYL-INSULATED FUNNEL EASY-ENTRY WITH EXTRA COPPER SLEEVE	TCRV1.25-3 TCSV1.25-3
		NYLON-INSULATED	NERV1.25-3 NESV1.25-3
		HEAT-SHRINK	HRV1.25-3 HSV1.25-3

NEW



TWO HOLE LONG BARREL COPPER LUGS

■ TWO-Hole Lug long Barrel

U.L.listed per 486A upto 35KV.

Ideal for industrial, Oil rig, mining, welding & transportation termination application. Heavy duty design which permits additional crimp for added mechanical strength.

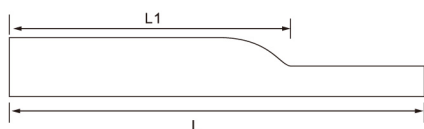
ITEM NO.	Dimension(mm)				A.W.G
	d	D	L	L1	
2L16M6	4.8	7.5	66	35	6
2L25M6	6	8.7	68	34	4
2L35M8	7.5	10.5	78.5	36	2
2L50M8	10	13	85	45	1/0
2L70M12	11	14.5	122.5	47	2/0
2L95M12	13.5	17.5	129	53	3/0
2L120M12	15	19	131	55	4/0
2L150M12	18	22.5	144	67.5	250/300MCM
2L185M12	19	24	153	76	300/350MCM
2L240M12	21	27	155	76	400/500MCM
2L400M12	26	33	168	92	-
2L500M12	30	38	160	98	-

ONE HOLE LONG BARREL COPPER LUGS

■ ONE-Hole Lug long Barrel

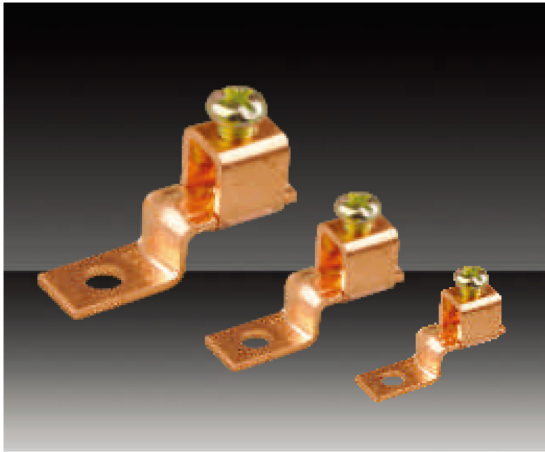
U.L.listed per 486A upto 35KV.

Ideal for industrial, Oil rig, mining, welding & transportation termination application. Heavy duty design which permits additional crimp for added mechanical strength.



ITEM NO.	Dimension(mm)				A.W.G
	d	D	L	L1	
L16M6	4.8	7.5	53.5	36.5	6
L25M6	6	8.7	52.5	35	4
L35M8	7.5	10.5	52.5	33	2
L50M8	10	13	62	42.5	1/0
L70M10	11	14.5	69.5	47.5	2/0
L95M12	13.5	17.5	85	53	3/0
L120M12	15	19	85	55	4/0
L150M12	18.5	22	94.5	67	250/300MCM
L185M16	19	24	154	75.5	300/350MCM
L240M16	21	27	116	78	400/500MCM
L400M16	26	33	135	95	-
L500M16	30	38	143	102	-

ONE-HOLE OFFSET FLOATING TONGUE LUG



High copper alloy terminal with offset tongue for joining a wide range of cable to equipment pads or bar. Easy to install with screwdriver or wrench. Connector is re-usable. Plain copper finish.

FEATURES	BENEFITS
Convenient range-taking design.	Reduces catalog number. One connector accommodates several conductor sizes.
High conductivity copper alloy.	Long lasting reliable contact.
Compact design.	Easy to use, Reduces labor time.
Slot Robertson screw, hex head /hex socket bolt.	No special installation tools required. Eliminates over-torquing /potential conductor damage.

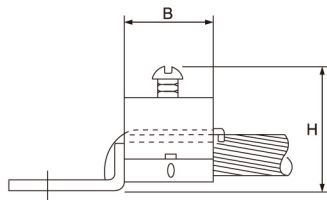
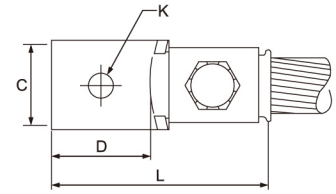
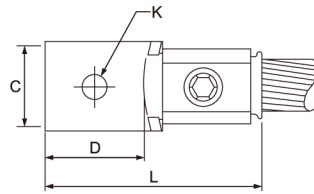
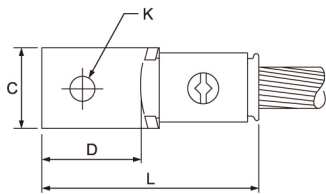


Fig.1

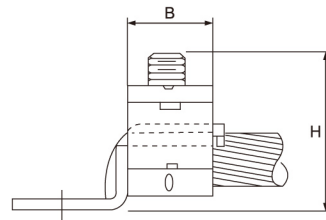


Fig.2

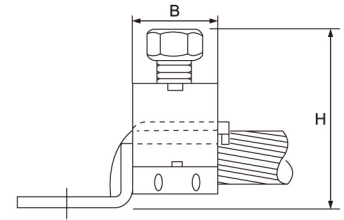


Fig.3

CATALOG NUMBER	FIG.	WIRE RANGE	B	C	D	H	K	STUD HOLE SIZE	L	SCREW TYPE	SCREW SIZE	RECOMMENDES TIGHTENING TORQUE
KLU25	1	14-10	0.28	0.31	0.47	0.66	0.14	8	0.91	Slot Robertson	8/32	20
KLU35	1	14-6	0.43	0.38	0.57	0.91	0.20	10	1.17	Slot Robertson	1/4	45
KLU70	1	8-2	0.50	0.50	0.61	1.05	0.27	1/4	1.32	Slot Robertson	5/16	50
KLU125	1	2-1/0	0.61	0.62	0.86	1.50	0.26	1/4	1.78	Slot Robertson	3/8	50
KLU175	2	4-3/0	0.75	0.75	1.20	1.40	0.41	3/8	2.20	Hex Socket	3/8	124
KLU225	2	2-4/0	1.00	1.00	1.24	1.64	0.34	5/16	2.54	Hex Socket	7/16	204
KLU300	3	1/0-350	1.21	1.10	1.60	2.63	0.41	3/8	3.25	Hex Head	5/8	325
KLU400	3	1/0-500	1.49	1.50	2.12	2.74	0.41	3/8	4.26	Hex Head	5/8	375
KLU650	3	600-1000	1.88	2.00	1.90	3.73	0.53	1/2	4.61	Hex Head	3/4	500

ALL SIZE ARE INCH

SPECIAL PIN VINYL-INSULATED TERMINAL



Manufactured in copper with tin coating by galvanic electroplating process.

TPP-10
8 AWG
10mm²



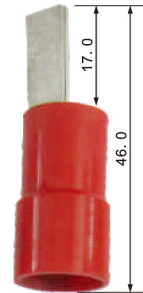
TPP-16
6 AWG
16mm²



TPP-25
4 AWG
25mm²



TPP-35
2 AWG
35mm²



Dimensions Listed In Tables Are Aproximate.

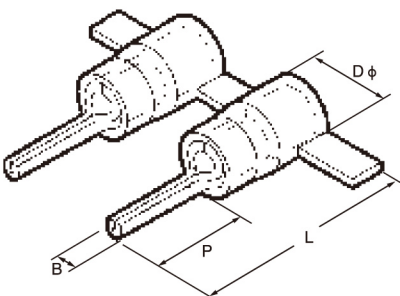
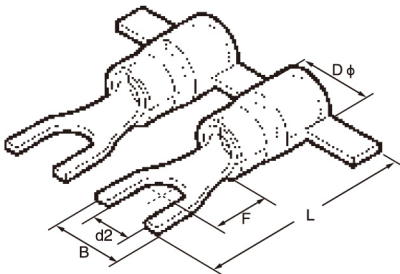
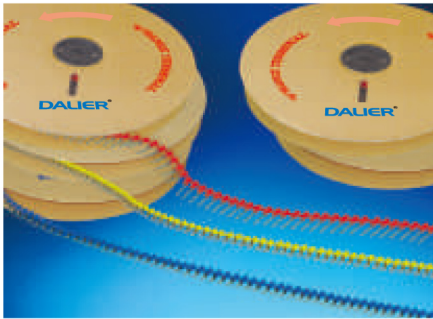
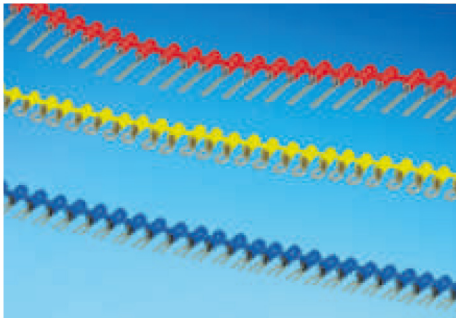
SPECIAL TUBULAR VINYL-INSULATED TERMINAL



Manufactured in copper with tin coating. Can be used with ATP-49 or similar type pliers.

CAT.#	φ HOLE mm	CONDUCTOR SIZE	
		AWG	mm ²
TPT-10	4-5-6-8	8	10,0
TPT-16	5-6-8	6	16,0
TPT-25	5-6-8-10	4	25,0
TPT-35	6-8-10-12	2	35,0
TPT-50	6-8-10-11-12	1 / 0	50,0
TPT-70	6-8-10-11-12	2 / 0	70,0

Dimensions Listed In Tables Are Aproximate.



The "D" range of terminals has been designed to meet the increasing demands for improved safety and reliability of electrical connectors.

Developed for use with production machinery, to give a quick and reliable crimped joint. The polycarbonate insulation, is a halogen free, self extinguishing thermoplastic material class VO [UL 94].

The unique funnel shaped entry of the insulation sleeve. Guarantees total insertion of the conductor strands into the terminal barrel, creating a secure and reliable, electrical and mechanical connection.

The maximum operating temperature is 115°C (surge 130°C)

The products have passed the European environment protection standard by SGS company.

CHAIN SPADE VINYL-INSULATED TERMINAL

■ WIRE RANGE: 0.5~1.5mm² (A.W.G22~16) MAX AMP: 1max=19A Material: Copper

ITEM NO.	American wire	Bolt pass diameter d2 φ (mm)	Dimension (mm)				Color	Thickness (mm)
			B	L	F	D φ		
DSV 1.25-3	#4	3.2	5.7	21.2	6.5	Red	0.75	
DSV 1.25-3.5	#6	3.7	5.7	21.2	6.5			
DSV 1.25-4	#8	4.3	6.4	21.2	6.5			
DSV 1.25-5	#10	5.3	8.1	21.2	6.5			

■ WIRE RANGE: 1.5~2.5mm² (A.W.G16~14) MAX AMP: 1max=27A Material: Copper

DSV 2-3	#4	3.2	5.7	21.2	6.5	Blue	0.8
DSV 2-3.5	#6	3.7	5.7	21.2	6.5		
DSV 2-4	#8	4.3	6.4	21.2	6.5		
DSV 2-5	#10	5.3	8.1	21.2	6.5		

■ WIRE RANGE: 4~6mm² (A.W.G12~10) MAX AMP: 1max=48A Material: Copper

DSV 5.5-4	#8	4.3	8.3	25.2	7.5	Yellow	1.0
DSV 5.5-5	#10	5.3	9.0	25.2	7.5		
DSV 5.5-6	1/4	6.4	9.0	25.2	7.5		

CHAIN PIN VINYL-INSULATED TERMINAL

■ WIRE RANGE: 0.5~1.5mm² (A.W.G22~16) MAX AMP: 1max=19A Material: Copper

ITEM NO.	Dimension (mm)				Color	Thickness (mm)
	F	L	P	D φ		
DPTV 1.25-10	1.9	20.0	10	4.3	Red	0.75
DPTV 1.25-12	1.9	22.2	12			
DPTV 1.25-18	1.9	28.0	18			

■ WIRE RANGE: 1.5~2.5mm² (A.W.G16~14) MAX AMP: 1max=27A Material: Copper

DPTV 2-10	1.9	20.0	10	4.9	Blue	0.8
DPTV 2-12	1.9	22.0	12			
DPTV 2-18	1.9	28.0	18			

■ WIRE RANGE: 4~6mm² (A.W.G12~10) MAX AMP: 1max=48A Material: Copper

DPTV 5.5-13	2.8	25.5	13	6.7	Yellow	1.0
-------------	-----	------	----	-----	--------	-----